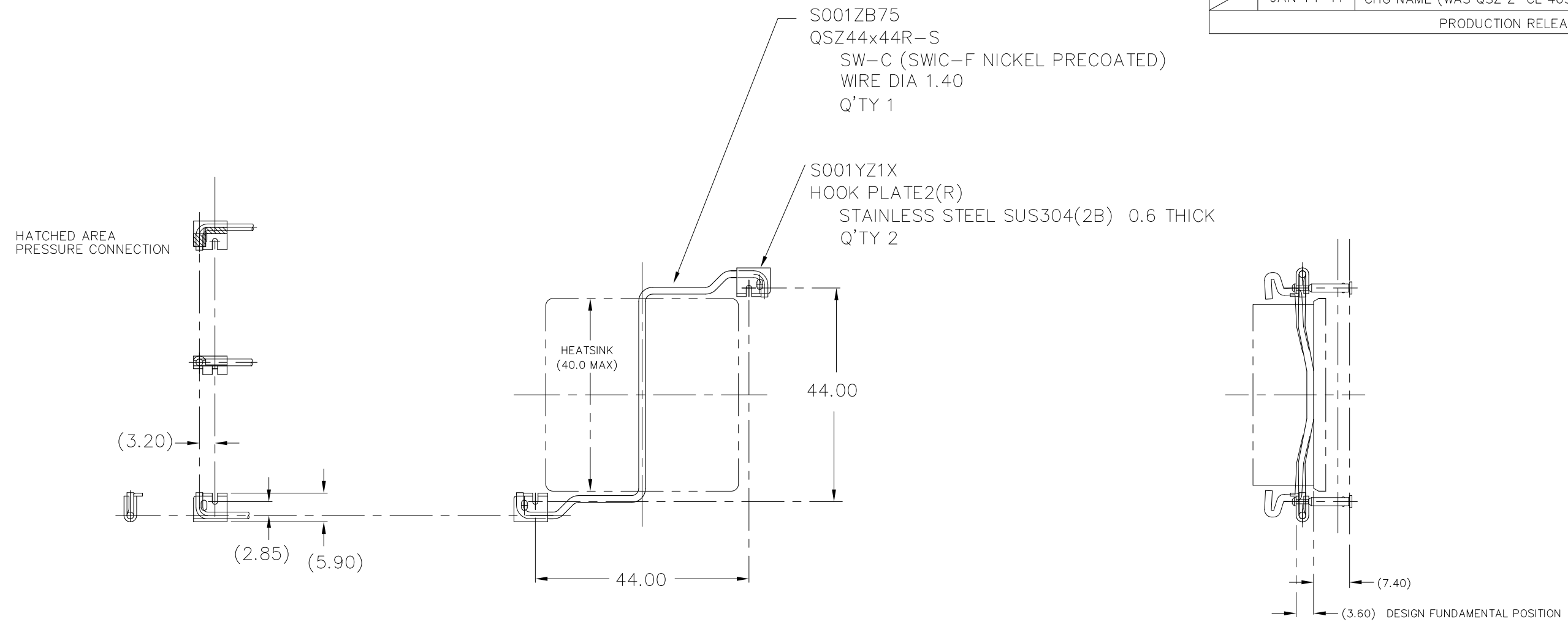


| REVISIONS | | | | |
|--------------------|------------|--------------------------------------|------|------|
| REV | DATE | DESCRIPTION | CHG | APPR |
| | JAN 14 '11 | CHG NAME (WAS QSZ Z-CL 40SQ AS-P44). | Y.S. | Y.S. |
| PRODUCTION RELEASE | | | | |



ANCHOR LAYOUT ON BOARD
 REQUIRES $\phi 1.80 \pm 0.05$ THRU HOLES
 FOR ANCHORS IN BOARD.

- NOTES : UNLESS OTHERWISE SPECIFIED
1. INTERPRET DIMENSIONS AND TOLERANCES PER ANSI Y14.5M
 2. ALL DIMENSIONS ARE IN MILLIMETERS.
 3. TOLERANCES :
 .XX ± 0.254
 .XXX ± 0.127
 ANGLES $\pm 3^\circ$

| ITEM | PART NO. | PART NAME | REMARK | Q'TY |
|-----------------------|-------------|-------------------|--------------------|-----------|
| ALPHA CO.,LTD. | | CSTM'R'S PART NO. | | |
| | MATERIAL | | NAME | QSZ44x44R |
| SCALE | APPR & CHCK | | PART NO. & DWG NO. | REV |
| 1 : 1 | Y.SUZUKI | | S001ZB74 | |
| DATE | DSGN & DWG | | RDCTN: | LOFF: |
| NOV 09. 2010 | Y.SUZUKI | | | |