

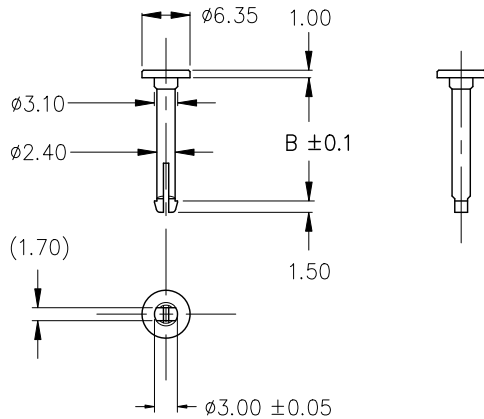
ALPHA

PIP2.5



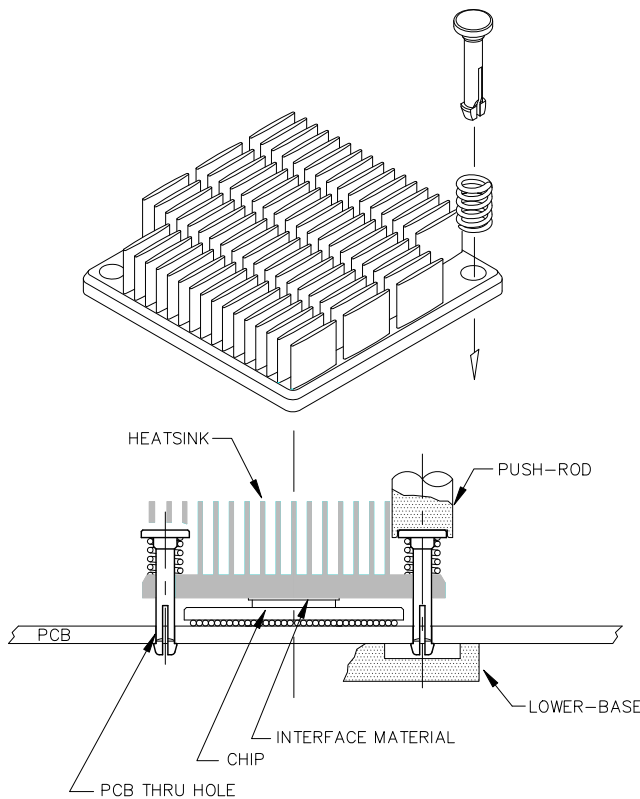
THE PIP2.5 SERIES MOUNTS THE HEATSINK TO THE PCB USING A SPRING. OBTAINING ADEQUATE PRESSURE REQUIRED FOR THERMAL INTERFACE MATERIAL PERFORMANCE IS EASILY ATTAINED BY CHOOSING AN APPROPRIATE SPRING (NOT INCLUDED).

DIM



P/N	PART NAME	B
S001YZ59	PIP2.5x9	9.0
S001YZ5A	PIP2.5x10	10.0
S001YZ5B	PIP2.5x11	11.0
S001YZ5C	PIP2.5x12	12.0
S001YZ5D	PIP2.5x14	14.0
S001YZ5E	PIP2.5x18	18.0

- MATERIAL : BRASS (ROHS COMPLIANT)
C6801 SAN-ETU METALS BZ5
OR EQUIVALENT
- DIMENSIONS mm



REFERENCES:

- HEATSINK:
REQUIRES HEATSINK HOLE DIAMETER OF 2.850 IF
"PIP2.5 + SPRING" NEEDS TO BE CAPTIVE.
- BOARD:
REQUIRES $\phi 2.500 \pm 0.05$ THRU HOLES IN BOARD.
- INSTALLATION:
THE SPRING SHOULD NOT BE COMPRESSED TO
SOLID LENGTH DURING INSTALLATION AND SHOULD
BE SUPPORTED BY THE LOWER-BASE.
PUSH-ROD AND LOWER-BASE NEEDS TO BE
OBTAINED/PRODUCED LOCALLY.

APR 2019

Alpha Company Ltd.

256-1 UEDA, NUMAZU-CITY SHIZUOKA-PREF., JAPAN
PHONE +81(55)966 0789
FAX +81(55)966 9192
E mail : alpha@micforg.co.jp
URL : <http://www.micforg.co.jp>

Alpha Novatech, Inc. - a subsidiary of Alpha Company.

473 Sapena Ct. #12 Santa Clara, CA 95054 USA
PHONE +1(408)567-8082
FAX +1(408)567-8053
E mail : sales@alphanovatech.com
URL : <http://www.alphanovatech.com>