

LPDM_S Series
LPDH_S Series
LPD_S Series

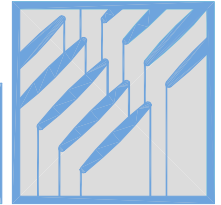
Low Pressure Drop Heat Sink
with Attachment Holes

ALPHA

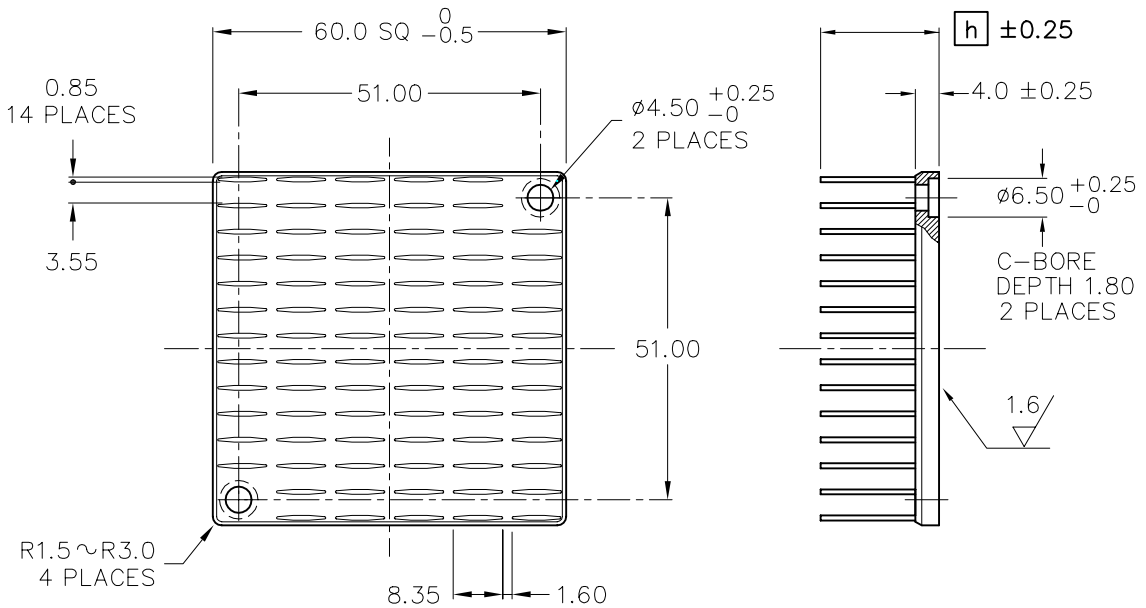
ALPHA

Low Pressure Drop Heat Sink
with attachment holes

LPDM60S



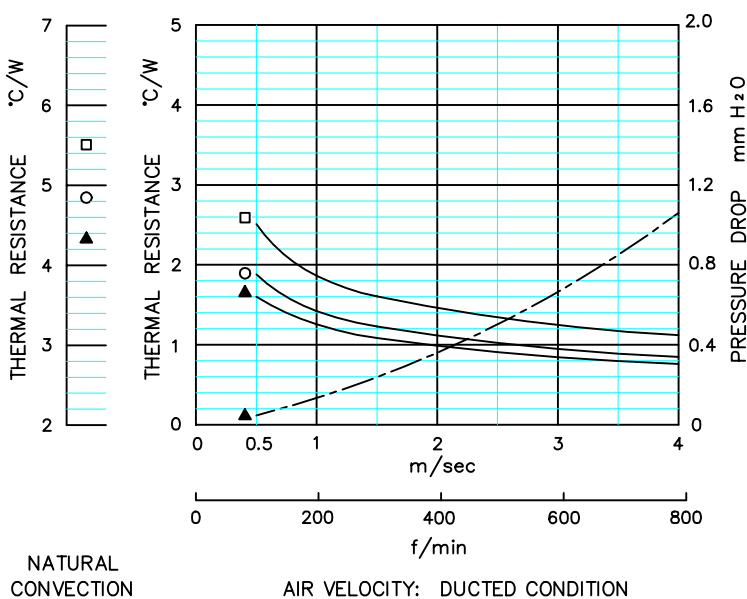
DIM



MODEL	HEIGHT [h]	WEIGHT (grams)
LPDM60S-15B	15	50.4
LPDM60S-20B	20	55.9
LPDM60S-25B	25	61.4

MATERIAL : A 6063
FINISH : BLACK ANODIZE
DIMENSIONS : mm

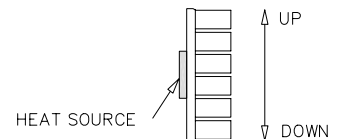
DATA



- LPDM60S-15B
- LPDM60S-20B
- ▲ LPDM60S-25B

● DUCTED CONDITION
DUMMY HEATER SIZE: 12.7 SQ
THERMAL RESISTANCE ———
PRESSURE DROP - - - -

● NATURAL CONVECTION
DUMMY HEATER SIZE: 12.7 SQ
DISSIPATED POWER: 9.9(W)



NOTE ORIENTATION OF HEAT SINK USED FOR NATURAL CONVECTION TESTING

■ BASED ON ALPHA'S STANDARD TEST PROCEDURE. REFER TO TECHNICAL INFORMATION.

Alpha Company Ltd.

256-1 UEDA, NUMAZU-CITY SHIZUOKA-PREF., JAPAN
PHONE +81(55)966 0789
FAX +81(55)966 9192
E mail : alpha@micforg.co.jp
URL : http://www.micforg.co.jp

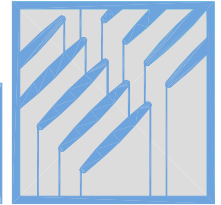
Alpha Novatech, Inc. - a subsidiary of Alpha Company.

473 Sapena Ct. #12 Santa Clara, CA 95054 USA
PHONE +1(408)567-8082
FAX +1(408)567-8053
E mail : sales@alphanovatech.com
URL : http://www.alphanovatech.com

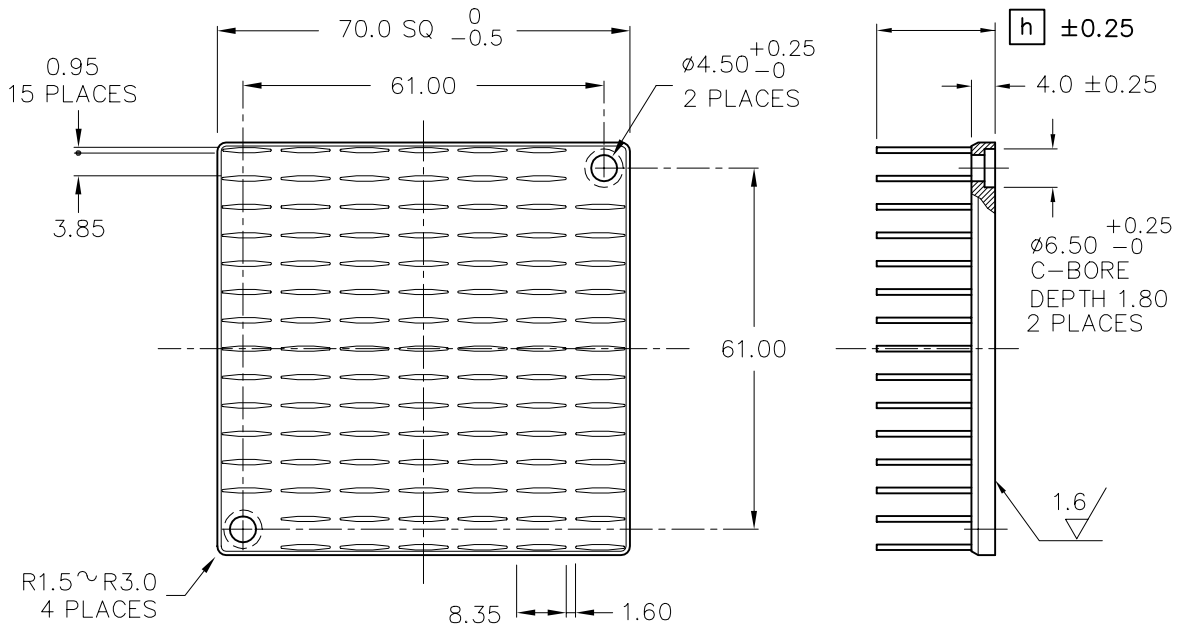
ALPHA

Low Pressure Drop Heat Sink
with attachment holes

LPDM70S



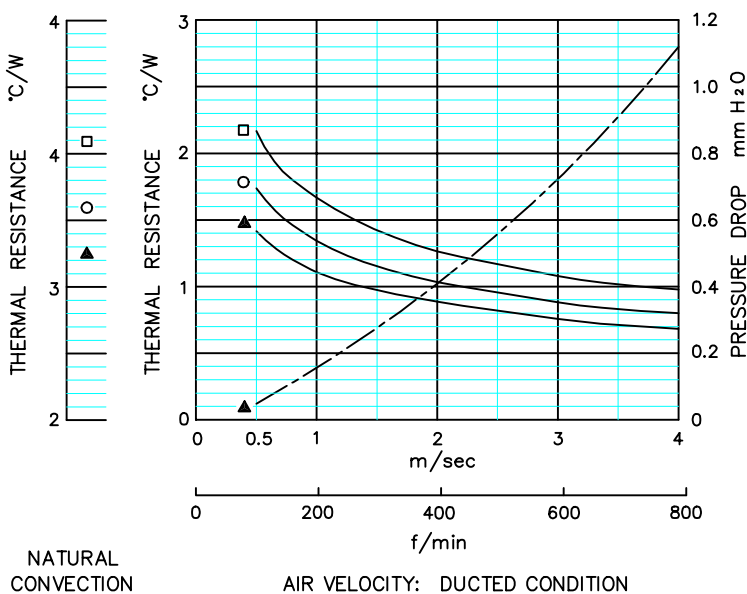
DIM



MODEL	HEIGHT [h]	WEIGHT (grams)
LPDM70S-15B	15	70.7
LPDM70S-20B	20	78.6
LPDM70S-25B	25	86.6

MATERIAL : A 6063
FINISH : BLACK ANODIZE
DIMENSIONS : mm

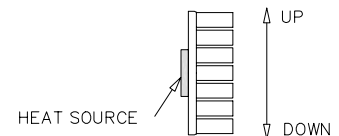
DATA



□ LPDM70S-15B
○ LPDM70S-20B
▲ LPDM70S-25B

● DUCTED CONDITION
DUMMY HEATER SIZE: 12.7 SQ
THERMAL RESISTANCE ———
PRESSURE DROP - - - - -

● NATURAL CONVECTION
DUMMY HEATER SIZE: 25.4 SQ
DISSIPATED POWER: 13.3(W)



NOTE ORIENTATION OF HEAT SINK USED FOR NATURAL CONVECTION TESTING

■ BASED ON ALPHA'S STANDARD TEST PROCEDURE.
REFER TO TECHNICAL INFORMATION.

Alpha Company Ltd.

256-1 UEDA, NUMAZU-CITY SHIZUOKA-PREF., JAPAN
PHONE +81(55)966 0789
FAX +81(55)966 9192
E mail : alpha@micforg.co.jp
URL : http://www.micforg.co.jp

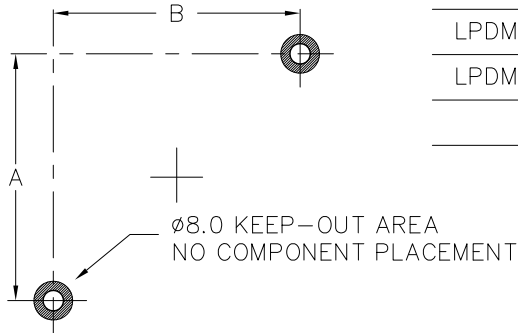
Alpha Novatech, Inc. - a subsidiary of Alpha Company.

473 Sapena Ct. #12 Santa Clara, CA 95054 USA
PHONE +1(408)567-8082
FAX +1(408)567-8053
E mail : sales@alphanovatech.com
URL : http://www.alphanovatech.com

REF



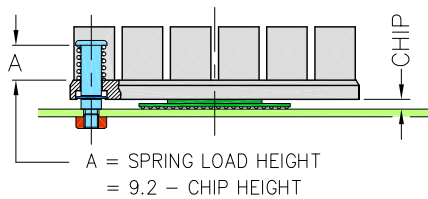
● BOARD KEEPOUT PATTERNS



LPDM60S AND UBM60S	51.0	51.0
LPDM70S AND UBM70S	61.0	61.0
MODEL	A	B

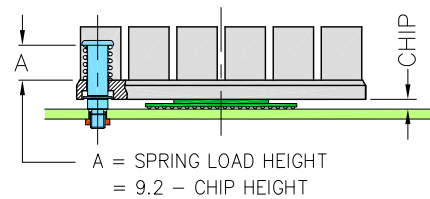
● INSTALLATION

USE HEX NUTS M3x0.5



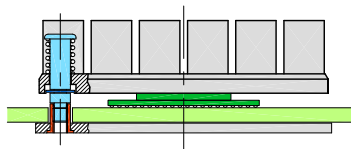
REQUIRES ø3.30 THRU HOLES IN BOARD.
RECOMMENDED P.C.B THICKNESS 1.6mm.
MINIMUM CHIP HEIGHT 1.5mm.

USE *MAC8* TH-1.6-XX-M3



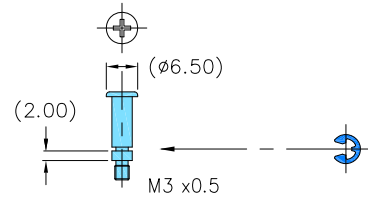
REQUIRES ø3.70 THRU HOLES IN BOARD.
MAC8 THREAD INSERT NEED THE SOLDERING.
RECOMMENDED P.C.B THICKNESS
MINIMUM 1.6mm ~ MAXIMUM 3.7mm
MINIMUM CHIP HEIGHT 1.5mm.

USE CUSTOM BACKING-PLATE



CUSTOM DESIGN FOR ANY PCB THICKNESS.

SHOULDER-SCREW/RETAINING RING E-2.5

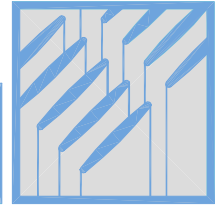


REFER TO THE DRAWING FOR DETAIL SPECIFICATION.

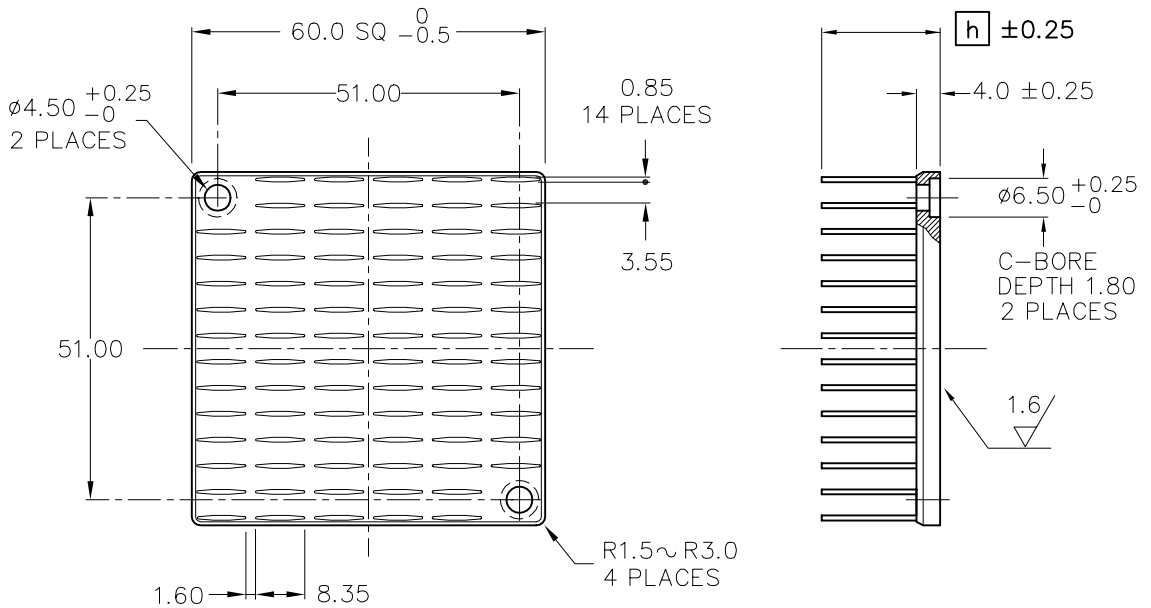
ALPHA

Low Pressure Drop Heat Sink
with attachment holes

LPDH60S



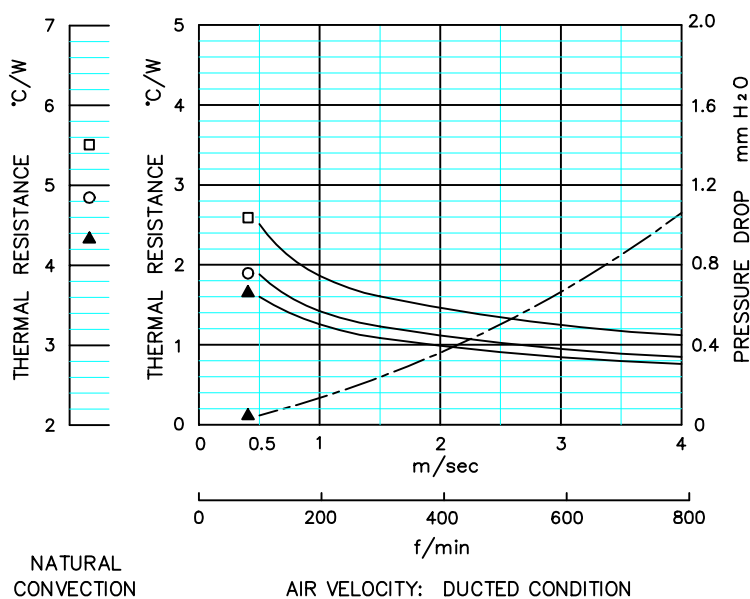
DIM



MODEL	HEIGHT [h]	WEIGHT (grams)
LPDH60S-15B	15	50.4
LPDH60S-20B	20	55.9
LPDH60S-25B	25	61.4

MATERIAL : A 6063
 FINISH : BLACK ANODIZE
 DIMENSIONS : mm

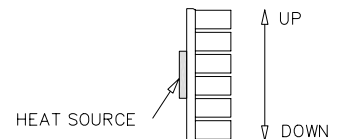
DATA



- LPDH60S-15B
- LPDH60S-20B
- ▲ LPDH60S-25B

● DUCTED CONDITION
 DUMMY HEATER SIZE: 12.7 SQ
 THERMAL RESISTANCE _____
 PRESSURE DROP - - - - -

● NATURAL CONVECTION
 DUMMY HEATER SIZE: 12.7 SQ
 DISSIPATED POWER: 9.9(W)



NOTE ORIENTATION OF HEAT SINK USED FOR NATURAL CONVECTION TESTING

■ BASED ON ALPHA'S STANDARD TEST PROCEDURE.
 REFER TO TECHNICAL INFORMATION.

Alpha Company Ltd.

256-1 UEDA, NUMAZU-CITY SHIZUOKA-PREF., JAPAN
 PHONE +81(55)966 0789
 FAX +81(55)966 9192
 E mail : alpha@micforg.co.jp
 URL : http://www.micforg.co.jp

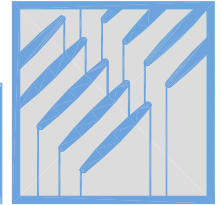
Alpha Novatech, Inc. - a subsidiary of Alpha Company.

473 Sapena Ct. #12 Santa Clara, CA 95054 USA
 PHONE +1(408)567-8082
 FAX +1(408)567-8053
 E mail : sales@alphanovatech.com
 URL : http://www.alphanovatech.com

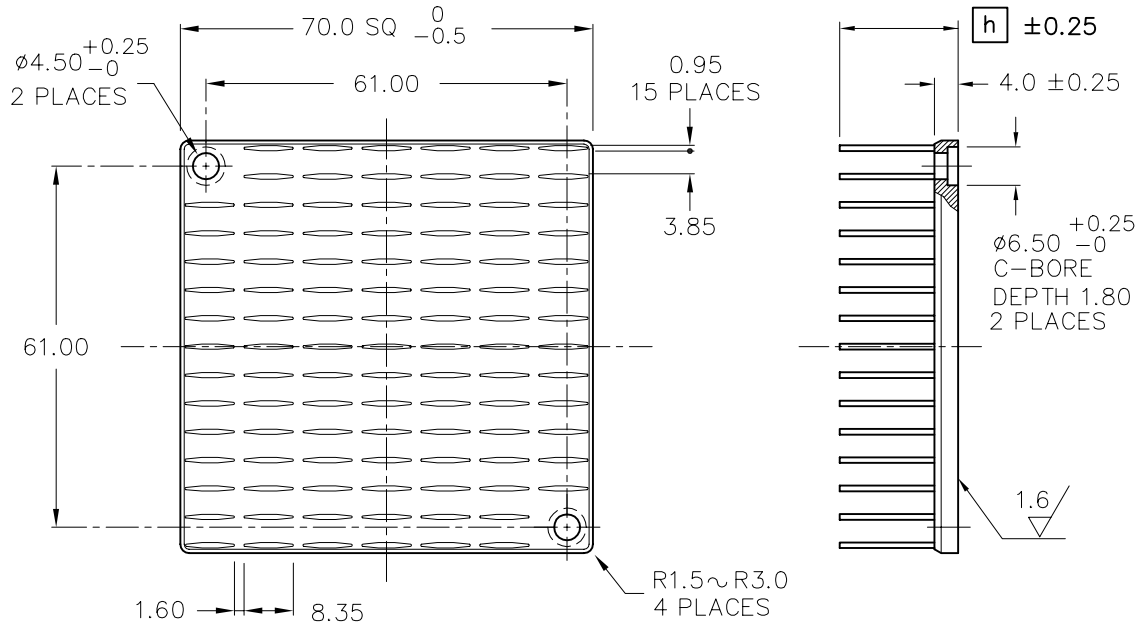
ALPHA

Low Pressure Drop Heat Sink
with attachment holes

LPDH70S



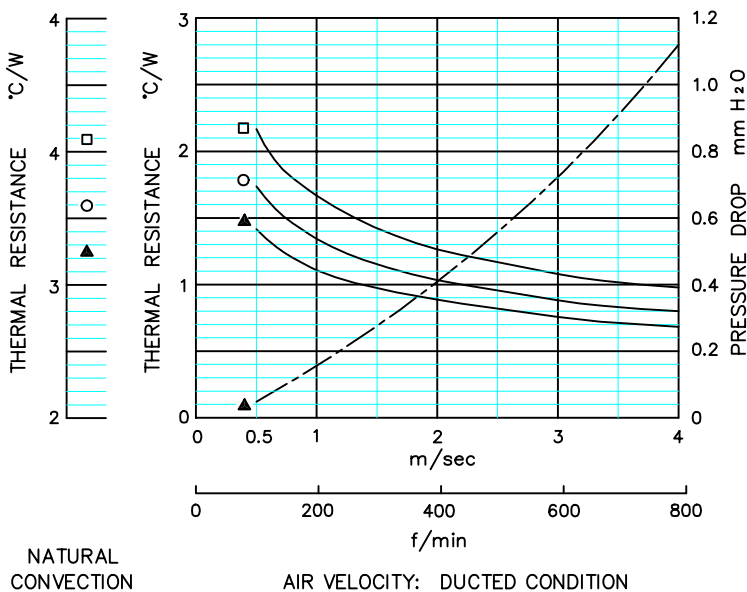
DIM



MODEL	HEIGHT [h]	WEIGHT (grams)
LPDH70S-15B	15	70.7
LPDH70S-20B	20	78.6
LPDH70S-25B	25	86.6

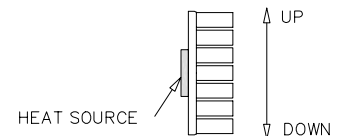
MATERIAL : A 6063
 FINISH : BLACK ANODIZE
 DIMENSIONS : mm

DATA



- LPDH70S-15B
- LPDH70S-20B
- ▲ LPDH70S-25B

- DUCTED CONDITION
 DUMMY HEATER SIZE: 12.7 SQ
 THERMAL RESISTANCE _____
 PRESSURE DROP - - - - -
- NATURAL CONVECTION
 DUMMY HEATER SIZE: 25.4 SQ
 DISSIPATED POWER: 13.3(W)



NOTE ORIENTATION OF HEAT SINK USED FOR NATURAL CONVECTION TESTING

- BASED ON ALPHA'S STANDARD TEST PROCEDURE.
 REFER TO TECHNICAL INFORMATION.

Alpha Company Ltd.

256-1 UEDA, NUMAZU-CITY SHIZUOKA-PREF., JAPAN
 PHONE +81(55)966 0789
 FAX +81(55)966 9192
 E mail : alpha@micforg.co.jp
 URL : http://www.micforg.co.jp

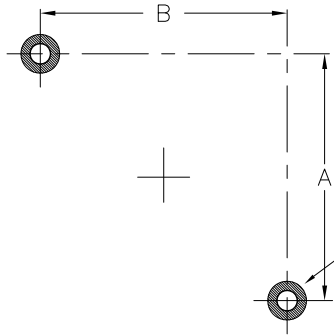
Alpha Novatech, Inc. - a subsidiary of Alpha Company.

473 Sapena Ct. #12 Santa Clara, CA 95054 USA
 PHONE +1(408)567-8082
 FAX +1(408)567-8053
 E mail : sales@alphanovatech.com
 URL : http://www.alphanovatech.com

REF



● BOARD KEEPOUT PATTERNS

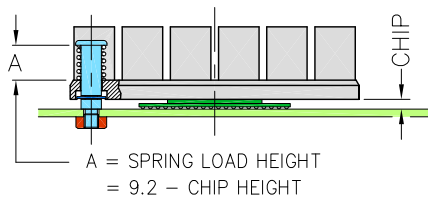


LPDH60S AND UBH60S	51.0	51.0
LPDH70S AND UBH70S	61.0	61.0
MODEL	A	B

ø8.0 KEEP-OUT AREA
NO COMPONENT PLACEMENT

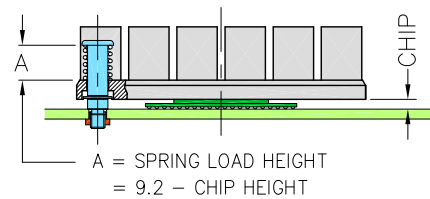
● INSTALLATION

USE HEX NUTS M3x0.5



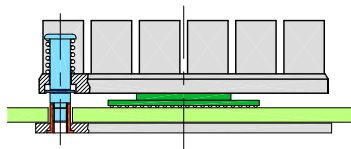
REQUIRES ø3.30 THRU HOLES IN BOARD.
RECOMMENDED P.C.B THICKNESS 1.6mm.
MINIMUM CHIP HEIGHT 1.5mm.

USE *MAC8* TH-1.6-XX-M3



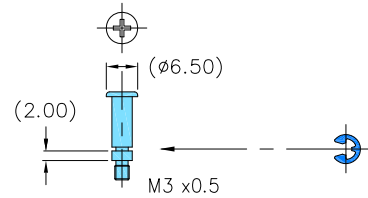
REQUIRES ø3.70 THRU HOLES IN BOARD.
MAC8 THREAD INSERT NEED THE SOLDERING.
RECOMMENDED P.C.B THICKNESS
MINIMUM 1.6mm ~ MAXIMUM 3.7mm
MINIMUM CHIP HEIGHT 1.5mm.

USE CUSTOM BACKING-PLATE



CUSTOM DESIGN FOR ANY PCB THICKNESS.

SHOULDER-SCREW/RETAINING RING E-2.5

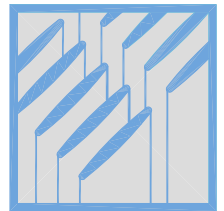


REFER TO THE DRAWING FOR DETAIL SPECIFICATION.

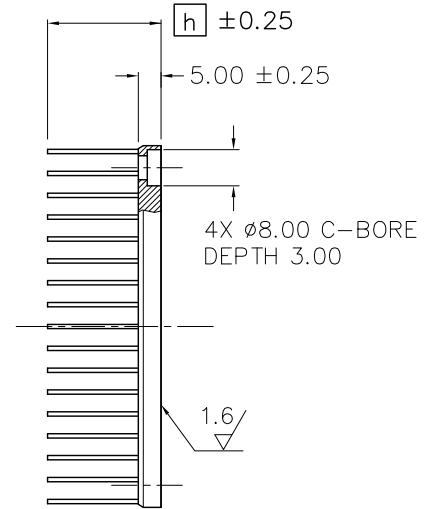
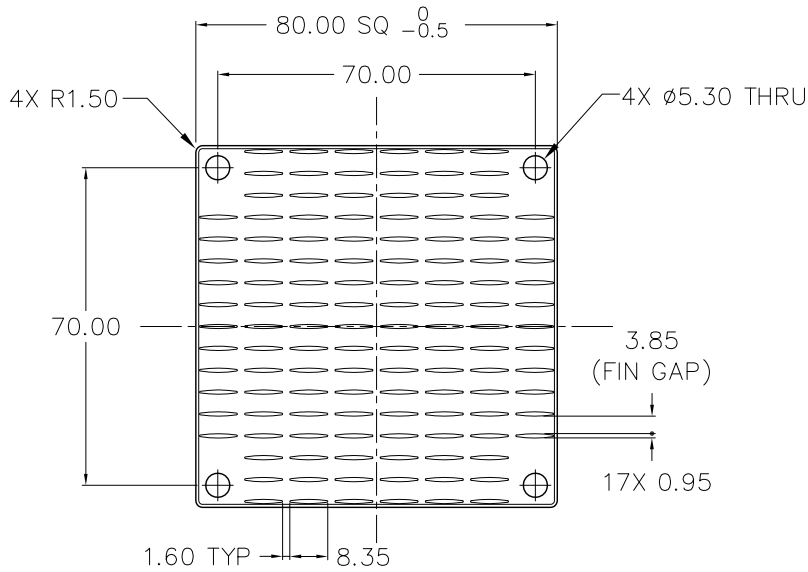
ALPHA

Low Pressure Drop Heat Sink
with attachment holes

LPD80S



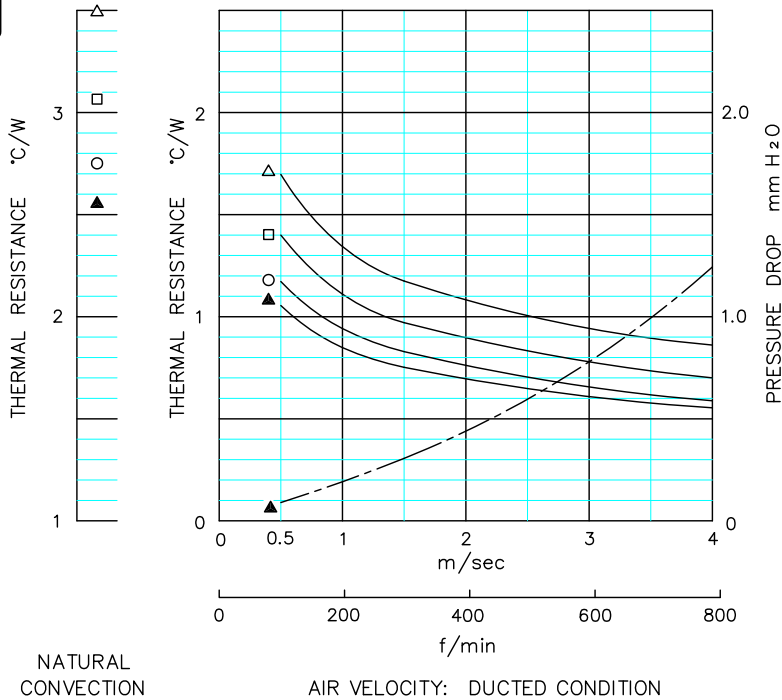
DIM



MODEL	HEIGHT h	WEIGHT (grams)
LPD80S-15B	15	103.6
LPD80S-20B	20	113.9
LPD80S-25B	25	124.1
LPD80S-30B	30	134.4

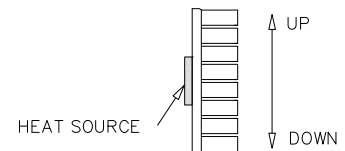
MATERIAL : A 6063
FINISH : BLACK ANODIZE
DIMENSIONS : mm

DATA



- △ LPD80S-15B
- LPD80S-20B
- LPD80S-25B
- ▲ LPD80S-30B

- DUCTED CONDITION
DUMMY HEATER SIZE: 12.7 SQ
THERMAL RESISTANCE ———
PRESURE DROP - - - -
- NATURAL CONVECTION
DUMMY HEATER SIZE: 25.4 SQ
DISSIPATED POWER: 16.0(W)



NOTE ORIENTATION OF HEAT SINK USED FOR NATURAL CONVECTION TESTING

- BASED ON ALPHA'S STANDARD TEST PROCEDURE.
REFER TO TECHNICAL INFORMATION.

Alpha Company Ltd.

256-1 UEDA, NUMAZU-CITY SHIZUOKA-PREF., JAPAN
PHONE +81(55)966 0789
FAX +81(55)966 9192
E mail : alpha@micforg.co.jp
URL : <http://www.micforg.co.jp>

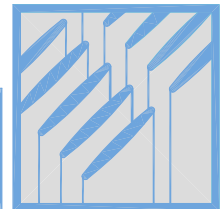
Alpha Novatech, Inc. - a subsidiary of Alpha Company.

473 Sapena Ct. #12 Santa Clara, CA 95054 USA
PHONE +1(408)567-8082
FAX +1(408)567-8053
E mail : sales@alphanovatech.com
URL : <http://www.alphanovatech.com>

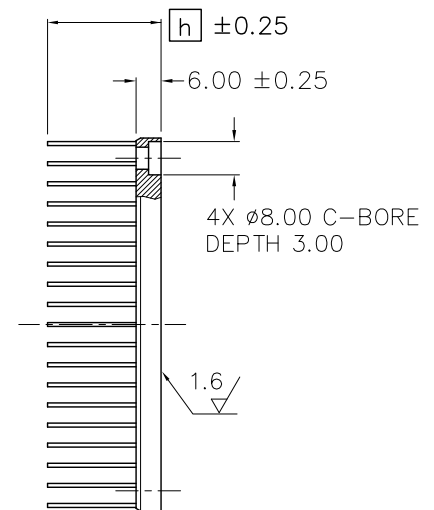
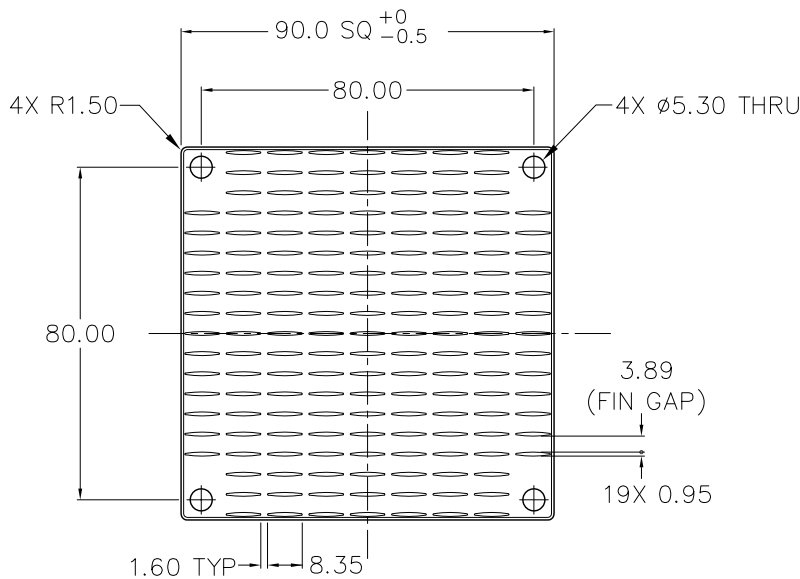
ALPHA

Low Pressure Drop Heat Sink
with attachment holes

LPD90S



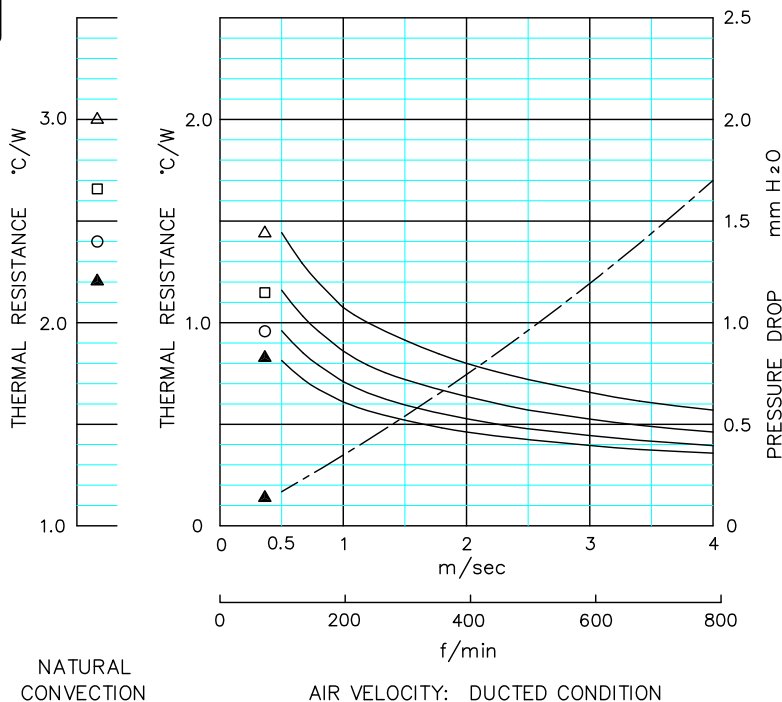
DIM



MODEL	HEIGHT [h]	WEIGHT (grams)
LPD90S-15B	15	150.9
LPD90S-20B	20	164.0
LPD90S-25B	25	177.1
LPD90S-30B	30	190.2

MATERIAL : A 6063
FINISH : BLACK ANODIZE
DIMENSIONS : mm

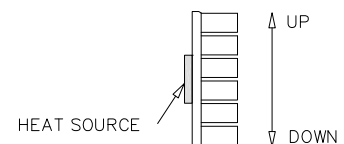
DATA



- △ LPD90S-15B
- LPD90S-20B
- LPD90S-25B
- ▲ LPD90S-30B

● DUCTED CONDITION
DUMMY HEATER SIZE: 25.4 SQ
THERMAL RESISTANCE _____
PRESSURE DROP - - - - -

● NATURAL CONVECTION
DUMMY HEATER SIZE: 25.4 SQ
DISSIPATED POWER: 18.6(W)



NOTE ORIENTATION OF HEAT SINK USED FOR NATURAL CONVECTION TESTING

■ BASED ON ALPHA'S STANDARD TEST PROCEDURE.
REFER TO TECHNICAL INFORMATION.

Alpha Company Ltd.

256-1 UEDA, NUMAZU-CITY SHIZUOKA-PREF., JAPAN
PHONE +81(55)966 0789
FAX +81(55)966 9192
E mail : alpha@micforg.co.jp
URL : http://www.micforg.co.jp

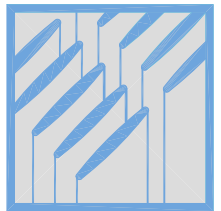
Alpha Novatech, Inc. - a subsidiary of Alpha Company.

473 Sapena Ct. #12 Santa Clara, CA 95054 USA
PHONE +1(408)567-8082
FAX +1(408)567-8053
E mail : sales@alphanovatech.com
URL : http://www.alphanovatech.com

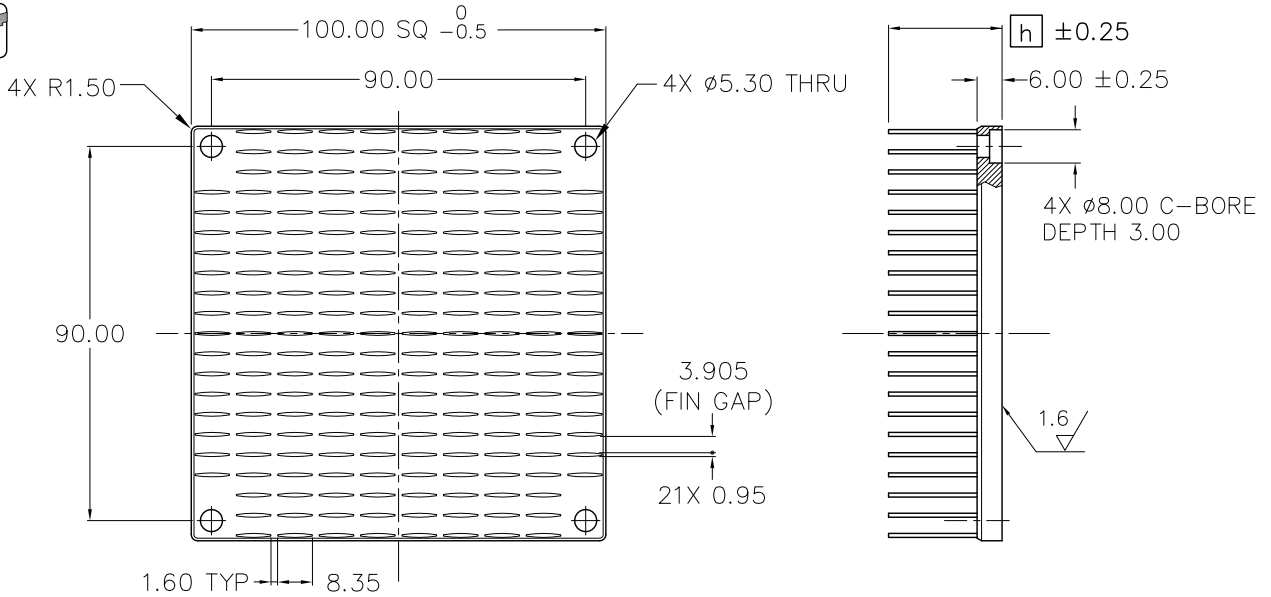
ALPHA

Low Pressure Drop Heat Sink
with attachment holes

LPD100S



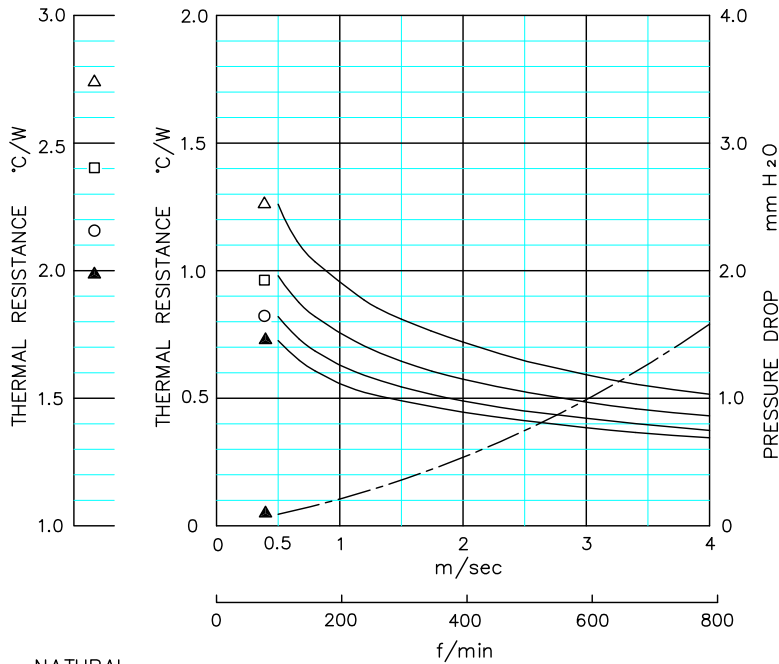
DIM



MODEL	HEIGHT h	WEIGHT (grams)
LPD100S-15B	15	187.3
LPD100S-20B	20	203.7
LPD100S-25B	25	220.0
LPD100S-30B	30	236.4

MATERIAL : A 6063
FINISH : BLACK ANODIZE
DIMENSIONS : mm

DATA



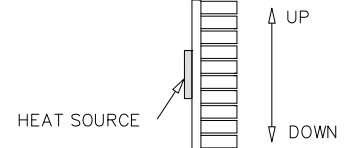
NATURAL
CONVECTION

AIR VELOCITY: DUCTED CONDITION

- △ LPD100S-15B
- LPD100S-20B
- LPD100S-25B
- ▲ LPD100S-30B

● DUCTED CONDITION
DUMMY HEATER SIZE: 25.4 SQ
THERMAL RESISTANCE ———
PRESSURE DROP - - - - -

● NATURAL CONVECTION
DUMMY HEATER SIZE: 25.4 SQ
DISSIPATED POWER: 20.6(W)



NOTE ORIENTATION OF HEAT SINK USED FOR NATURAL CONVECTION TESTING

■ BASED ON ALPHA'S STANDARD TEST PROCEDURE.
REFER TO TECHNICAL INFORMATION.

Alpha Company Ltd.

256-1 UEDA, NUMAZU-CITY SHIZUOKA-PREF., JAPAN
PHONE +81(55)966 0789
FAX +81(55)966 9192
E mail : alpha@micforg.co.jp
URL : <http://www.micforg.co.jp>

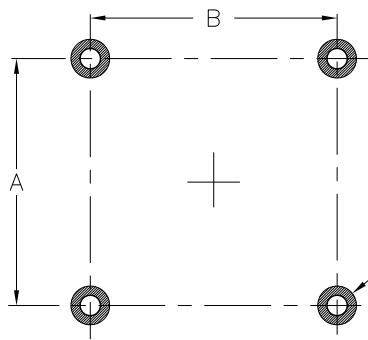
Alpha Novatech, Inc. - a subsidiary of Alpha Company.

473 Sapena Ct. #12 Santa Clara, CA 95054 USA
PHONE +1(408)567-8082
FAX +1(408)567-8053
E mail : sales@alphanovatech.com
URL : <http://www.alphanovatech.com>

REF



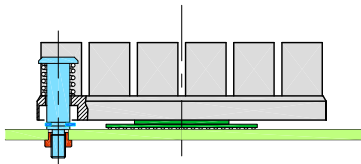
● BOARD KEEPOUT PATTERNS



LPD80S AND UB80S	70.0	70.0
LPD90S AND UB90S	80.0	80.0
LPD100S AND UB100S	90.0	90.0
MODEL	A	B

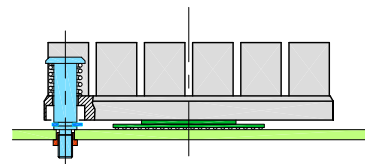
● INSTALLATION

USE PEM SMTSO-M3-**



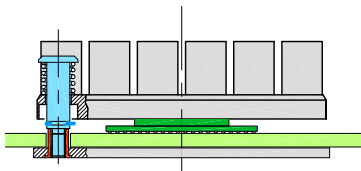
REQUIRES $\phi 4.22$ THRU HOLES IN BOARD.
PEM NUTS NEED THE SOLDERING.

USE MAC8 TH-1.6-**-M3



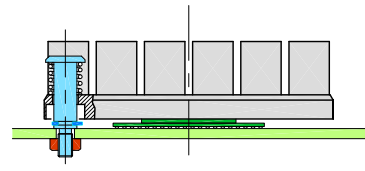
REQUIRES $\phi 3.70$ THRU HOLES IN BOARD.
MAC8 THREAD INSERT NEED THE SOLDERING.
RECOMMENDED P.C.B THICKNESS
MIN 1.6mm ~ MAX 3.7mm

USE ALPHA STANDARD BACKING PLATE



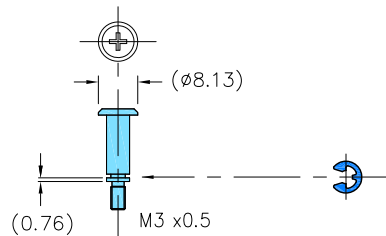
REQUIRES $\phi 4.80$ THRU HOLES IN BOARD.

USE HEX NUTS M3x0.5



REQUIRES $\phi 3.30$ THRU HOLES IN BOARD.

SHOULDER-SCREW / RETAINING RING E-3.0



REFER TO THE DRAWING FOR DETAIL SPECIFICATION.