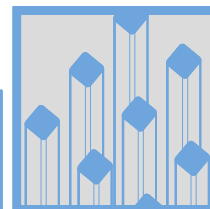


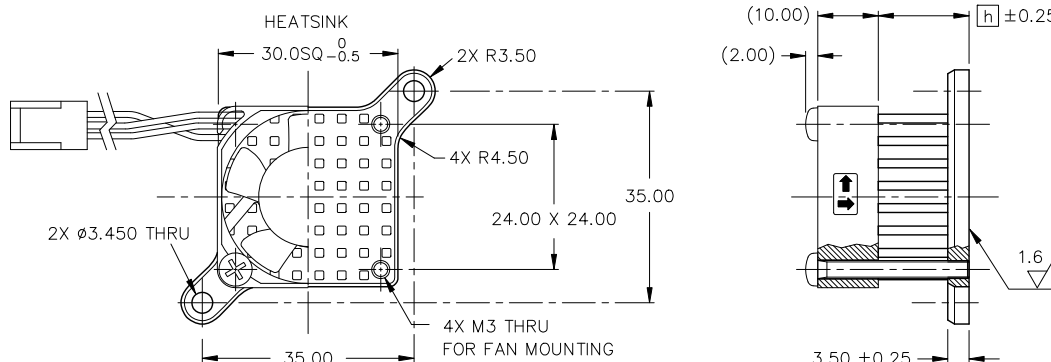
FSR Series

Active Heat Sink
with Mounting Tabs

ALPHA



DIM



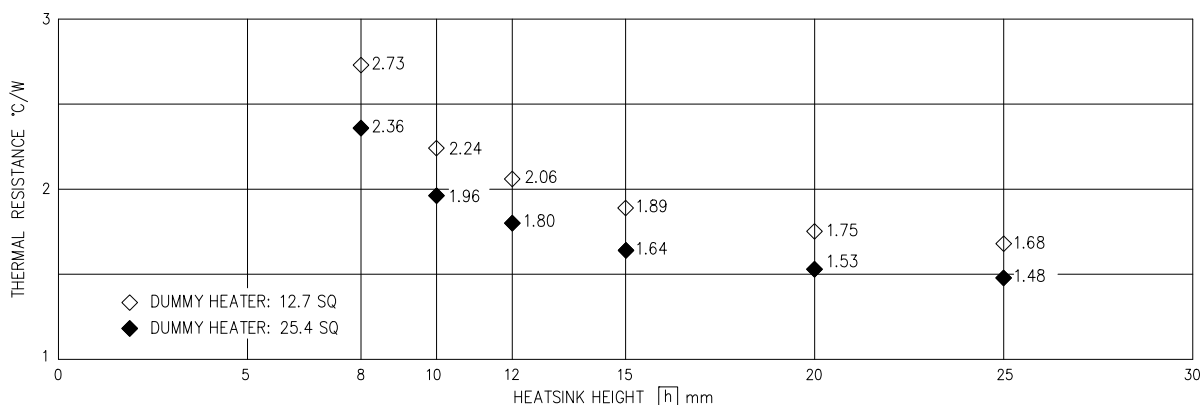
- HEAT SINK MATERIAL : A6063 FINISH : BLACK ANODIZE
- FAN M31: COFAN F-3010H12BIII 30 SQ +0.5/-0, 10 +0.5/-0 THK
- SCREW (Q'TY 3) PAN HEAD PHILLIPS M3 STEEL Cr3+
- FAN DETAIL: PLEASE VISIT OUR WEBSITE.

HEATSINK HEIGHT [h]	WEIGHT (grams)	MODEL	WEIGHT (grams)
8.00	10.4	FSR30-8M31	22.6
10.00	11.1	FSR30-10M31	23.5
12.00	11.7	FSR30-12M31	24.4
15.00	12.7	FSR30-15M31	25.8
20.00	14.4	FSR30-20M31	28.1
25.00	16.1	FSR30-25M31	30.4

■ TO SELECT PUSH PINS AND SPRINGS, TO APPLY TIM. PLEASE VISIT OUR WEBSITE.

DIMENSIONS : mm

DATA

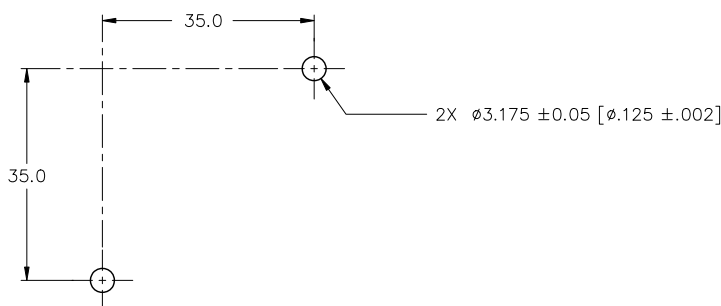


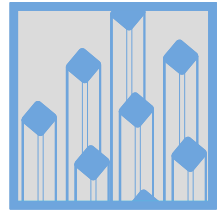
- TESTING SPECIFICATIONS, DUMMY HEATER SIZE : 12.7SQ & 25.4 SQ
- BASED ON ALPHA'S STANDARD TEST PROCEDURE. REFER TO TECHNICAL INFORMATION.

REF

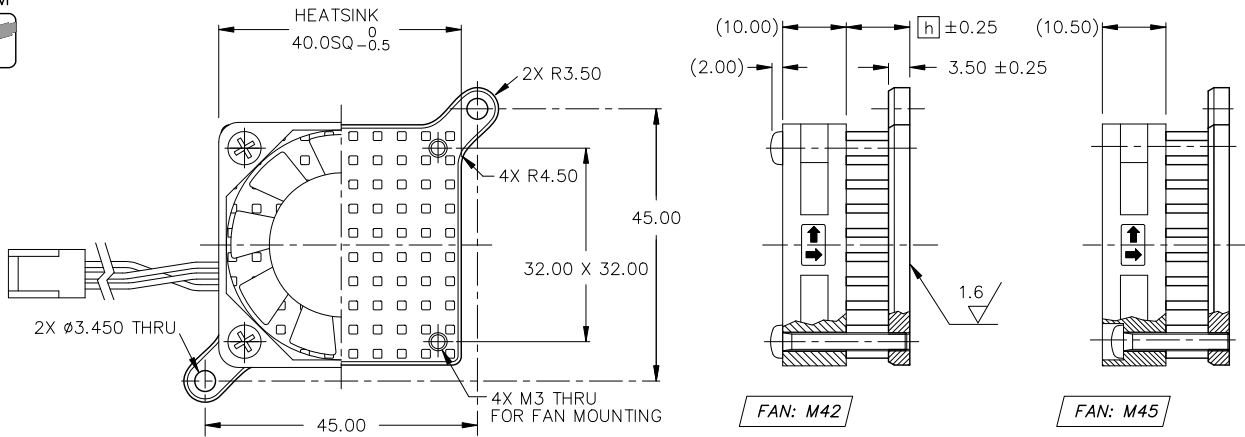


PCB HOLE LAYOUT





DIM



- HEAT SINK MATERIAL : A6063
FINISH : BLACK ANODIZE
- SCREW (Q'TY 4) PAN HEAD PHILLIPS M3 STEEL Cr3+

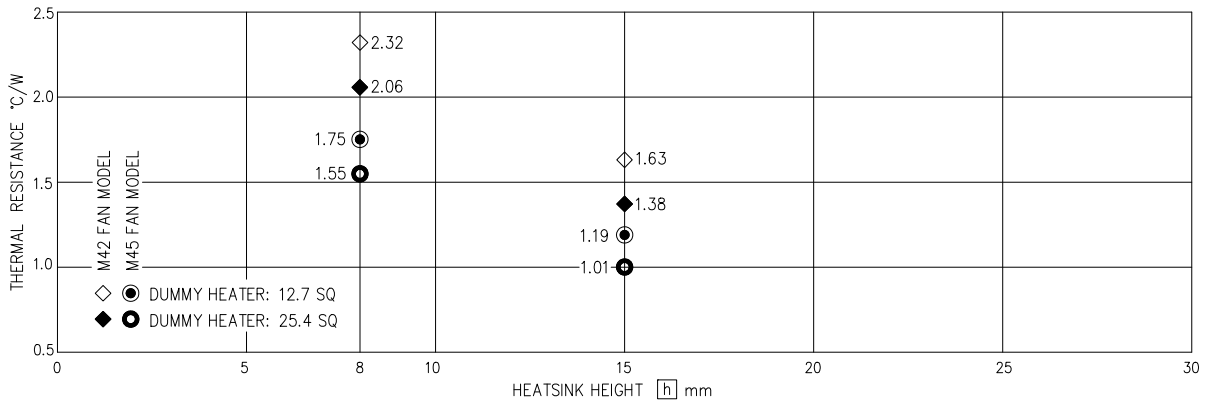
- FAN M42: SANYO DENKI 109P0412H901
40 SQ +1/-0, 10 +1/-0 THK
- M45: COFAN F-4010H12BI-12
40.5 SQ ±0.4, 10.5 ±0.2 mm THK
- FAN DETAIL: PLEASE VISIT OUR WEBSITE.

HEATSINK HEIGHT [h]	WEIGHT (grams)	M42 FAN MODEL	WEIGHT (grams)	M45 FAN MODEL	WEIGHT (grams)
8.00	18.2	FSR40-8M42	42.3	FSR40-8M45	41.8
15.00	21.4	FSR40-15M42	47.0	FSR40-15M45	46.5

■ TO SELECT PUSH PINS AND SPRINGS, TO APPLY TIM. PLEASE VISIT OUR WEBSITE.

DIMENSIONS : mm

DATA



- TESTING SPECIFICATIONS, DUMMY HEATER SIZE : 12.7SQ & 25.4 SQ
- BASED ON ALPHA'S STANDARD TEST PROCEDURE. REFER TO TECHNICAL INFORMATION.

REF



PCB HOLE LAYOUT

